

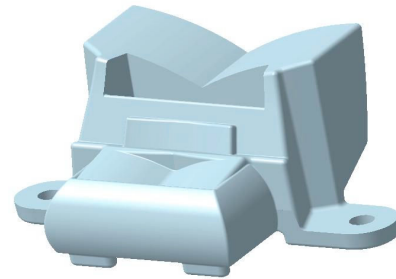


STANDARD LENS FOR STREET LIGHTING

N-T2S

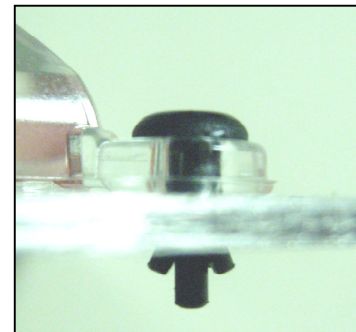
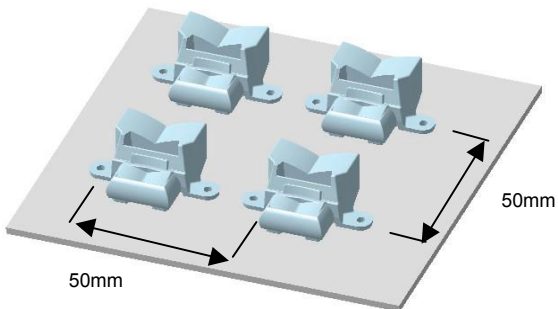
GENERAL INFORMATION

PART NUMBER	N-T2S
TYPE	II short
DESIGNED FOR	Nichia NS6083A/B
MATERIAL	Acrylic UL-HB94



MECHANICAL FEATURES

- ⇒ Same lens orientation on a flat PCB board
- ⇒ Lens pitch: 50mm
- ⇒ Various attachment method (Glue, Clip, Snap rivet)



Suggested attachment method with snap rivet through the PCB

OPTICAL PROPERTIES

- ⇒ New pattern generation with sharp cut off and square illumination pattern
- ⇒ Homogeneity ratio better than 3:1
- ⇒ Max distance between poles = 3.5xPole height
- ⇒ Lens collection efficiency over 85%
- ⇒ Dark Sky requirements
- ⇒ Cut off classification
- ⇒ IES available at dbmlighting.com

